



Our range of products contains:

- **Customized parts to plan**
Ø 2 mm - 32 mm
- **Cylindrical pins**
DIN 7 / ISO 2338
DIN 6325 / ISO 8734
DIN 7979D / ISO 8735
- **Taper pins**
DIN 1B / ISO 2339B
DIN 7978 / ISO 8736
DIN 7977 / ISO 8737
- **Grooved pins**
DIN 1469 - 1475 / ISO 8739 - 8745
- **Grooved drive studs**
DIN 1476 - 1477 / ISO 8746 - 8747

Quality- and environmental management system

- ISO/TS 16949:2009
ISO 9001:2008
DIN EN ISO 14001:2004

DEMA GUIDE PIN

Non-cutting manufacturing





Given the tougher technical requirements coming from industry we have made it our task to develop a high value cylindrical pin which is uniquely cost effective and the optimum for usage.

We managed to unite these characteristics with further important features in our

DEMA GUIDE PIN



The benefits of the DEMA GUIDE PIN

Non-cutting processing

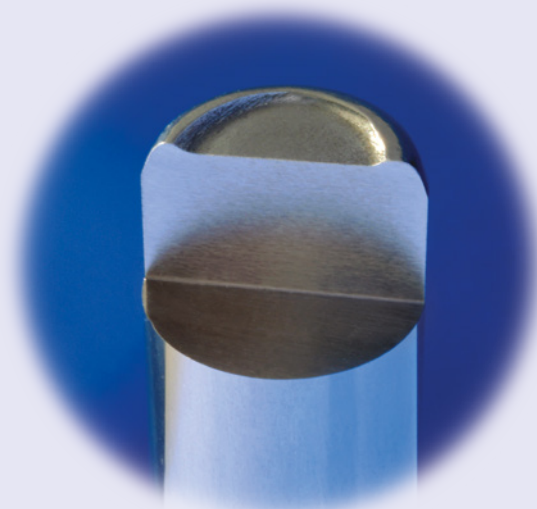
Free choice of materials

Cost savings

Free from burrs

Environmental friendly production

Ideally suited for automatic assembly



Head of pin as cross section

**Conforms to
DIN EN ISO 8734 and DIN EN ISO 2338**

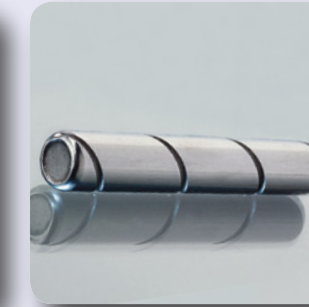
We supply DEMA GUIDE PIN in different versions:

... with flat surface

... with knurls

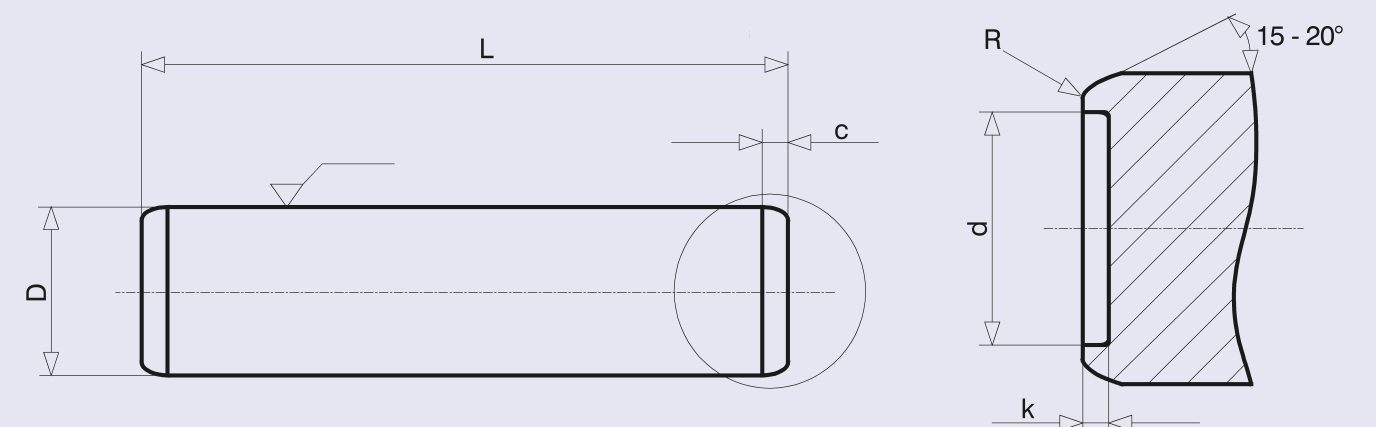
... with spiral groove

... as grooved pin



Materials

Free cutting steels, bearing steels, case hardening steels, stainless steels and common constructional steels - also in hardened version.



Technical data sheet

Diameter		4	5	6	7	8	10	12	14	16	18
L	from	10	8	8	10	12	12	14	16	25	25
	to	50	60	80	80	100	100	115	120	120	120
R		0,3	0,6	0,6	0,8	1,0	1,0	1,2	1,2	1,2	1,2
d	~	3,0	4,0	4,5	5,0	6,0	8,0	10,0	11,0	12,0	14,0
k	~	0,15	0,2	0,25	0,3	0,4	0,5	0,5	0,5	0,5	0,5
c	~	0,8	0,8	1,2	1,4	1,6	2,0	2,5	2,7	3,0	3,5